



Did You Know...

Centrifugal clutches are the original soft start clutch but they can also be used as brakes on runaway systems? Applications such as elevators and lift systems need a back-up/fail-safe mechanism, and a centrifugal clutch is a proven, cost-effective solution.

Product modifications with the Centric® design are simple. Recently, a lift system manufacturer easily modified its machine design to incorporate the Centric clutch as its fail-safe mechanism.

Centrifugal clutches are perfect for dual drive or stand-by systems. These clutches are often used on high inertia applications like crushers, fans, pumps and back-up generators. The heavy starting torque associated with such equipment can cause torque spikes that shorten the life of motors, speed reducers and other drive train components. Machine designers can extend equipment life – and save money – by protecting their system with a Centric clutch.

Centric Centrifugal Clutches

*for unmatched flexibility in solving
real world problems*



Features and Benefits

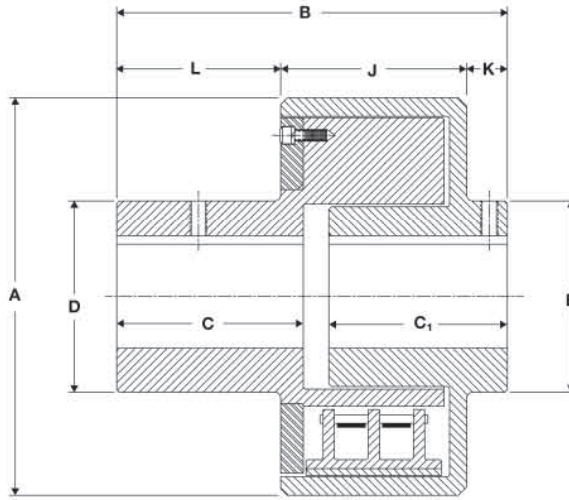
Boston Gear Centrifugal clutches offer advantages for a variety of drive applications:

- *Self-actuating/automatic clutch that requires no external controls*
- *Highly efficient with no energy loss at rated speeds*
- *Provides soft start acceleration*
- *Spring loaded design offers controlled engagement at a specific RPM*
- *Allows for smaller motors to run more efficiently at start-up*
- *Provides shock protection for equipment that could be jammed or overloaded*

All clutches are custom designed to engage per the customer requirements

- *Vertical lift-out and QD bushing designs available upon request*
- *Custom centrifugal clutches can be designed to be RPM limiters or brakes on runaway systems.*

Type A Free Style and Spring-Controlled Centrifugal Clutches



Clutch Coupling Sizes	Maximum Bore Inches	Minimum Bore Inches	Wt. in Lbs. with Max. Bore	Dimensions in Inches								HP*
				A	B	C	C ₁	D	J	K	L	
5 x 1-1/2	1-3/8	3/4	15	5-3/8	4-11/16	2-3/16	2-7/16	2-1/2	2-3/16	5/8	1-13/16	40
6 x 2	1-5/8	3/4	25	6-1/2	6-1/4	2-15/16	3-3/16	3	3-1/16	3/4	2-7/16	92
7 x 2-1/2	1-7/8	1	40	7-5/8	7-1/4	3-7/16	3-11/16	3-3/8	3-9/16	3/4	2-15/16	125
10 x 3	2-7/8	1-1/4	100	10-13/16	8-13/16	4-1/8	4-9/16	5-1/8	4-3/16	1	3-5/8	215
12 x 4	3-1/2	1-1/2	200	13-1/8	11-3/8	5-1/2	5-11/16	6-1/4	5-1/2	1	4-7/8	356
16 X 5	4-3/4	2-1/2	400	17-3/8	13-3/4	6-3/4	6-13/16	8-1/2	6-5/8	1	6-1/8	562
24 x 8	7	3	1315	25-1/2	20-3/16	10	10	12-1/2	9-7/8	1-1/16	9-1/4	2280

* The actual horsepower rating is largely dependent on RPM and may be higher or lower than the indicated HP. Contact engineering before finalizing clutch selection.

Complete an Application Data Form online at
www.bostongear.com/products/centric.html

Or call technical support at
704-688-7324



Boston Gear
 14 Hayward Street • Quincy, MA 02171
 617-328-3300 • Fax: 617-479-6238
www.bostongear.com

P-1504-BG 88039 10/05
 Printed in USA