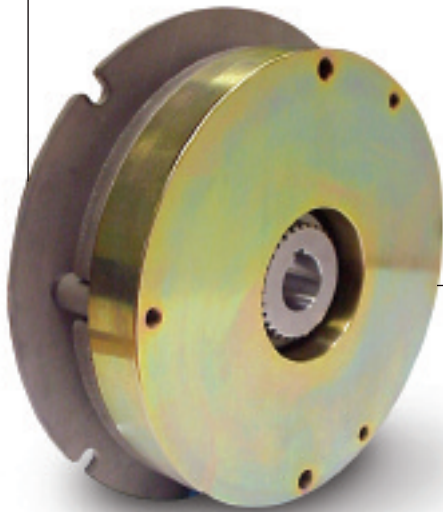




PK

Electrically Released Brake



Parking and stopping standard brake

Forklift Applications

- Walk Behinds
- Stacker
- Ride on Pallet Truck
- Low Level Order Picker
- High Level Order Picker
- Reach Truck
- Electric Counter Balance

Warner Electric/Matrix International is a world leader in the design and manufacture of hydraulic, pneumatic and electromagnetic brakes and clutches for battery powered vehicles. We offer a full range of traction motor and load wheel brakes and specialize in customized solutions to meet your specific performance and installation requirements. We have over 60 years of experience delivering high technology, cost effective braking systems. We offer production, engineering and application support from our facilities in Europe, the U.S. and China. Contact us today to discuss how our dedicated engineers can assist you.

The Pan-Cake (PK) range is a pre-assembled on/off dry failsafe electromagnetic brake. This failsafe brake is used for parking and emergency only. The AC motor is used in combination with the PK brake for regenerative braking of the truck. The brake uses a high coefficient of friction material and powerful coil to optimize torque in a low profile package. The coil is linked with a pulse width modulation power supply to reduce power consumption and maintenance.

The benefits of this cost competitive range include; one piece design for easy assembly, lower power consumption, longer battery life, and overall lower maintenance costs. The low profile design is particularly suitable for back to back dual drive configurations such as sit trucks and boom lifts.

- High torque within a compact space envelope
- Multi-step braking versions available
- Low profile space saving design
- Dust cover option

For Technical Assistance Call

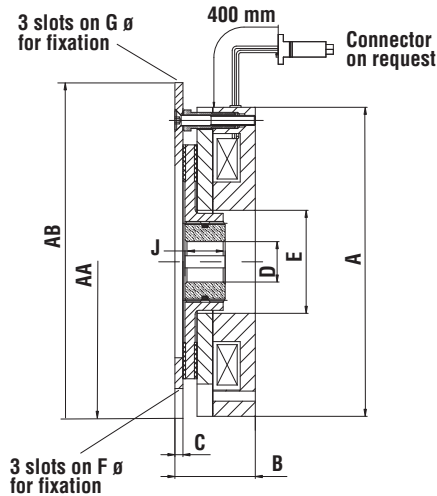
800-825-9050



An Altra Industrial Motion Company



Electrically Released Brake



Size	010	020	035	060	100
Static Torque (Nm)	20	40	75	125	200
Static Torque (lb. ft)	14.8	29.5	55.3	92.2	147.5
A	96	133	153	164	184
B	39.7	43	43	59	75
C	3.2	4.5	6	6	10
D	15/20H7	15/20H7	19.05/20/25H7	20/25/30H7	25/30/35H7
J	20	20	25	30	30
E	28.5	43.5	51	59	70
F	90	112	132	145	170
G	112	132	145	170	196
AA small Flange	96	133	153	164	184
AB large Flange	115	138	178	185	215
Ambient Temperature	Minus 20 Plus 60 Degree C				
Voltage	Pulse Width Modulation - based on customer requirements				



Matrix International
 Brechin, Angus • Scotland DD9 7EP
 +44(0) 1356 602000
 E-mail: sales@matrix-international.com



Warner Electric
 449 Gardner Street
 South Beloit, IL 61080 • USA
 800-825-6544
 www.warnerelectric.com



Warner Electric Europe
 B.P. 11095, F-49182
 St Barthelemy d'Anjou Cedex • France
 +33(0)2 41 21 24 24
 www.warnerelectric-eu.com